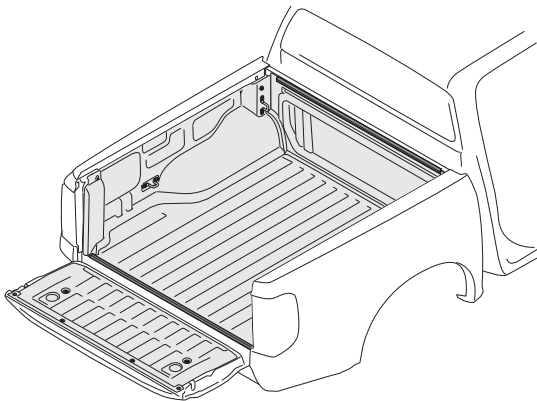


INSTALLATION INSTRUCTIONS MANUAL



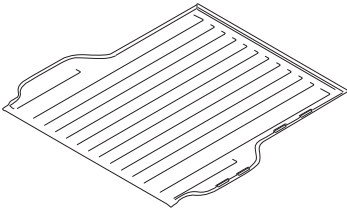
Caution for installation

Read this mounting manual carefully, before your start the installation.

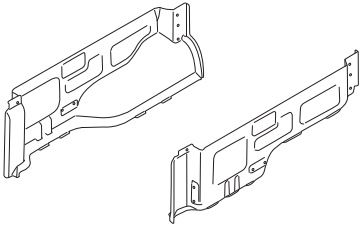
- 1. Area where to install product should be clean.
- 2. During installation, person who installed should take off any ornaments.

Product name	KD LINER DC U/R
Model name	FORD RANGER DBC 2022+
Inst. number	L03-1628

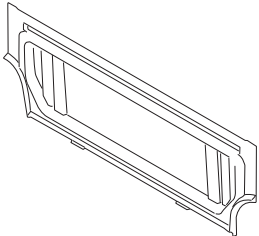
Component parts



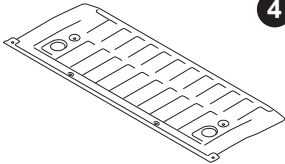
1x



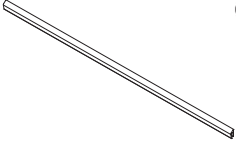
LH 1x
RH 1x




1x




1x



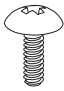
2x



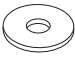
M8
2x



M8 OD23
14x

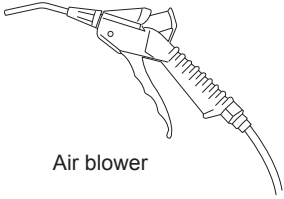


M6
2x




M6 OD20
12x

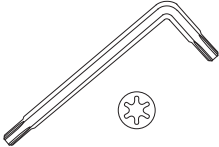
Tools used



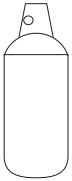
Air blower




Socket torque wrench
No.12

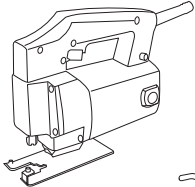



Torx No. T15,T30,T40



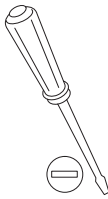
Corrosion protection
spray such as
ZEP IRONCLAD or
equivalent product

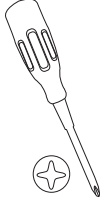


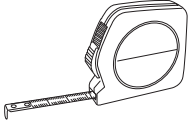




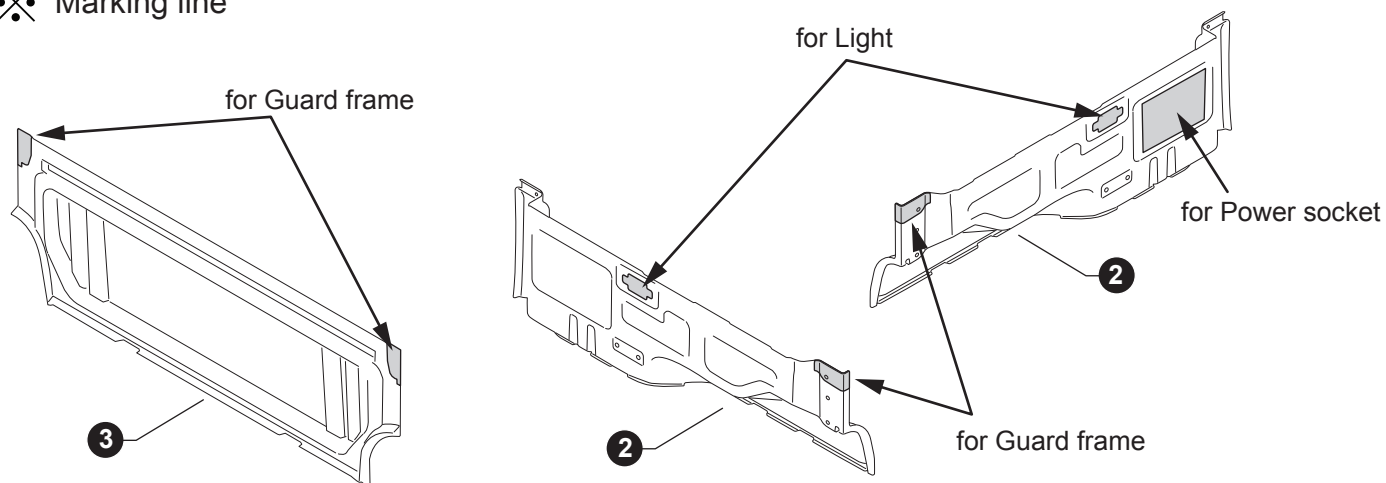
Masking tape



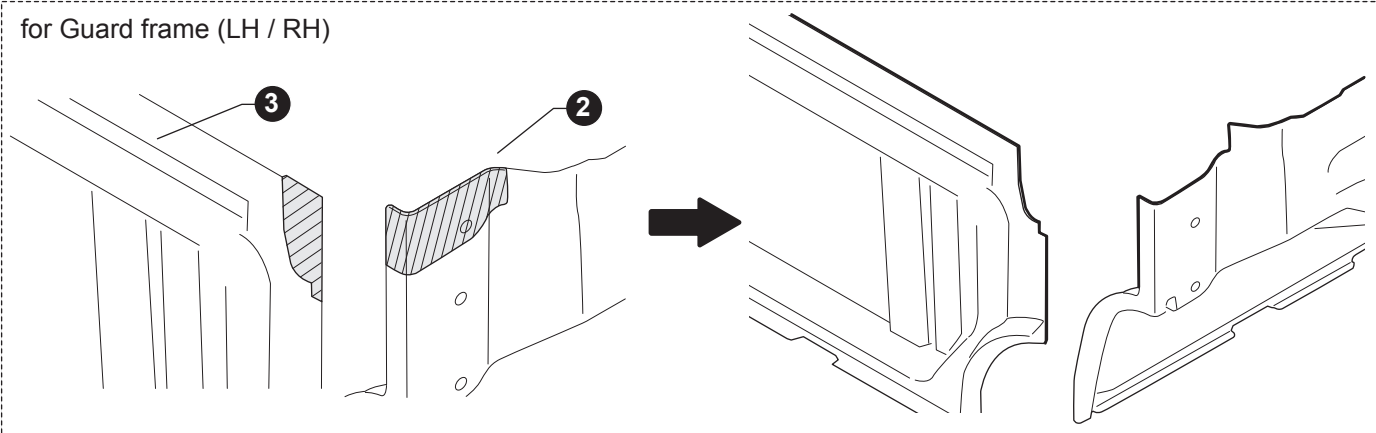




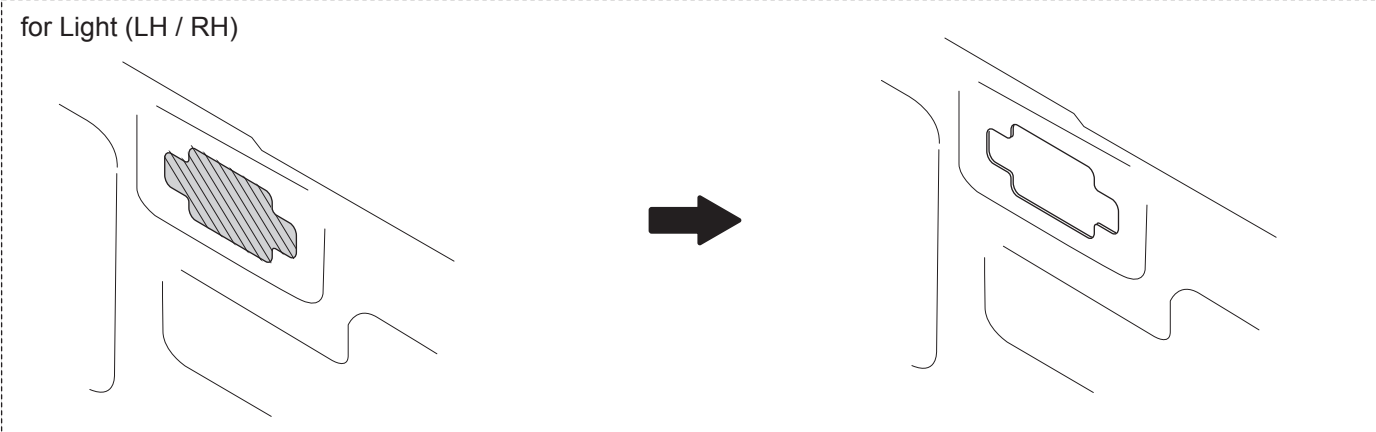
✂ Marking line



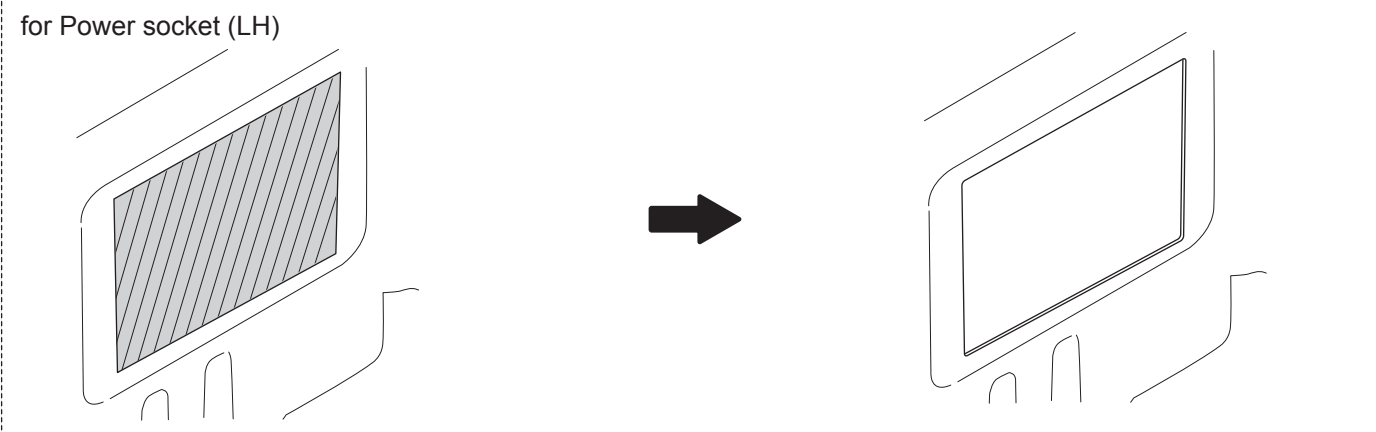
for Guard frame (LH / RH)



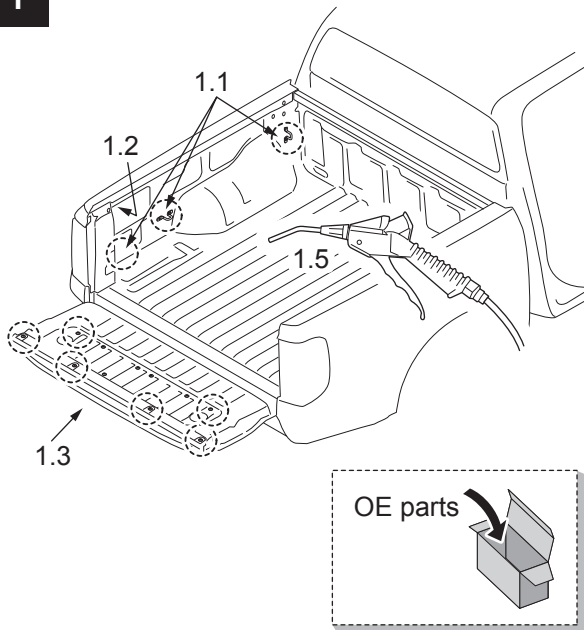
for Light (LH / RH)



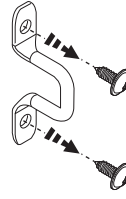
for Power socket (LH)



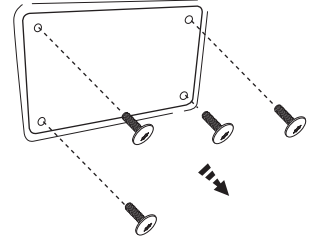
1



1.1 RH/LH (6x)



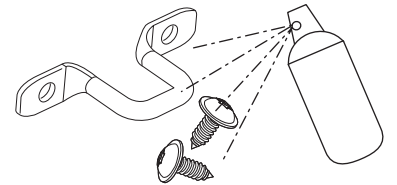
1.2 RH/LH



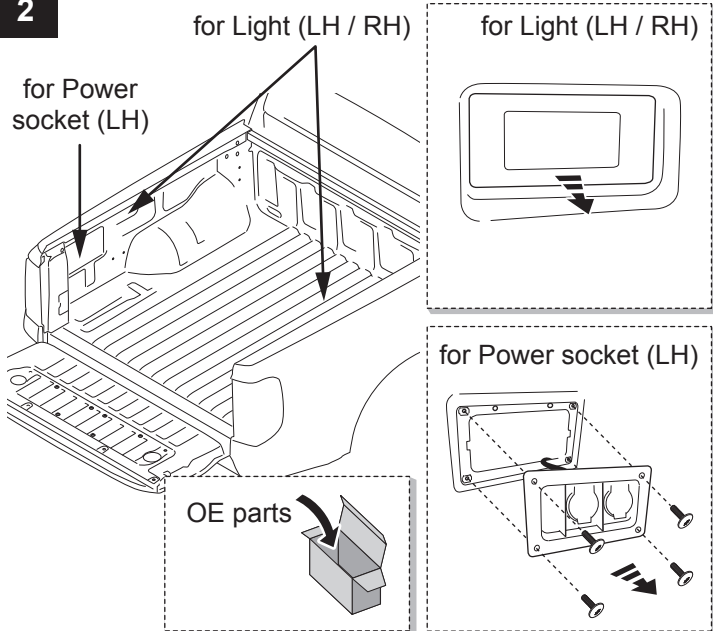
1.3 (6x)



1.4 (OE parts)

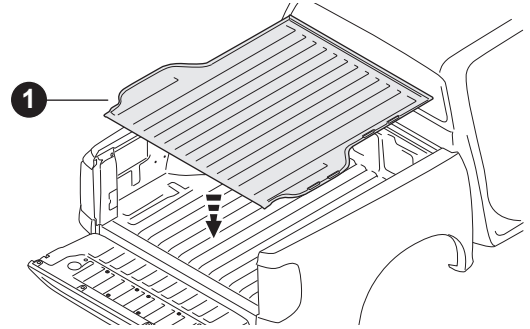


2

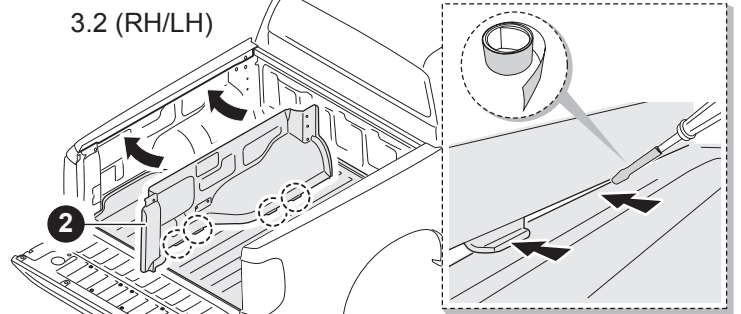


3

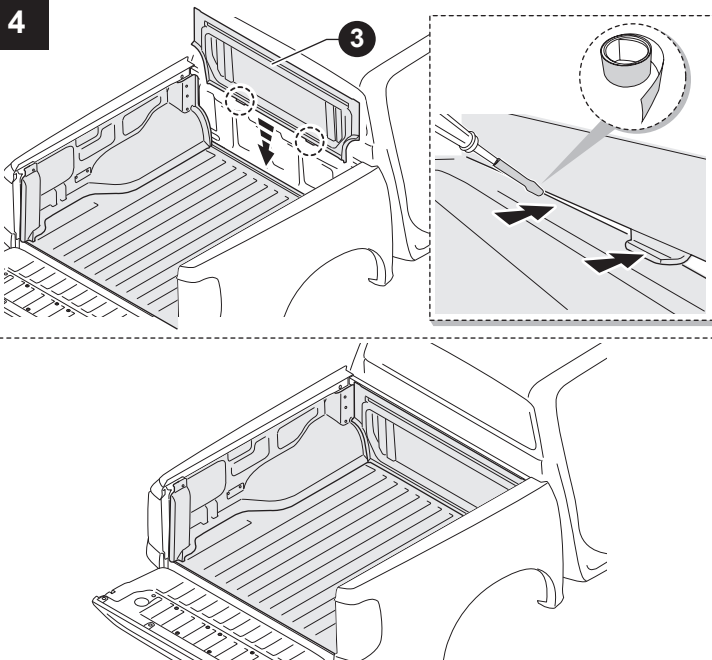
3.1



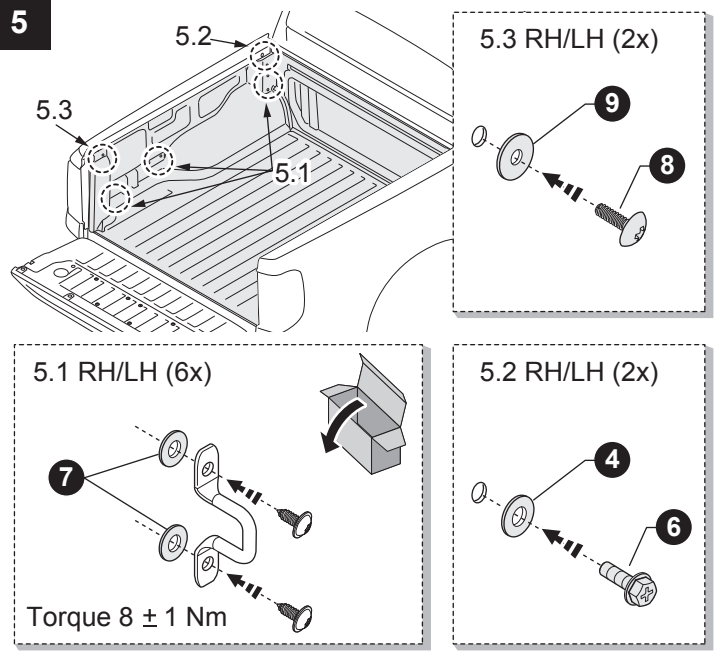
3.2 (RH/LH)



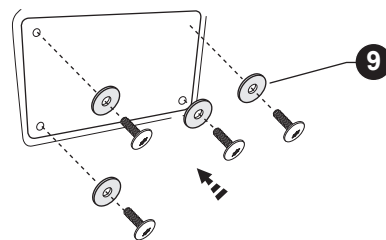
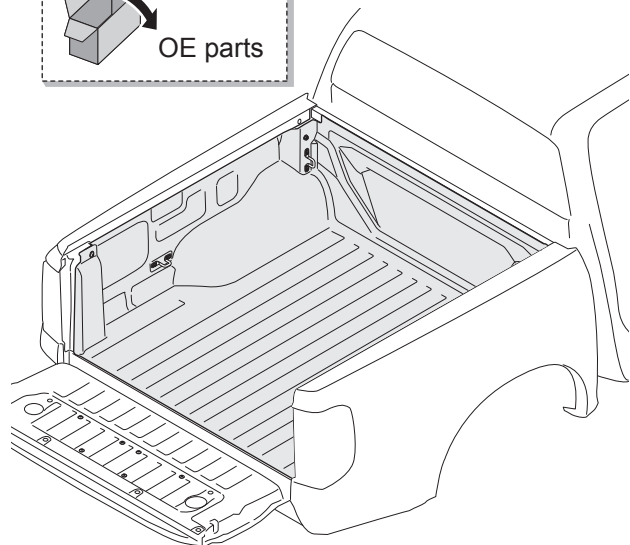
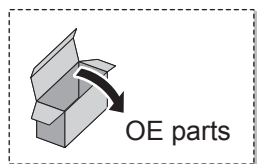
4



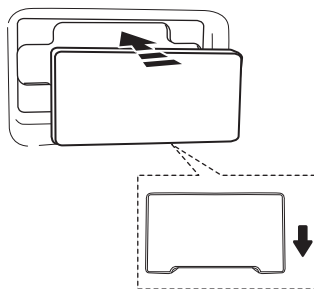
5



6

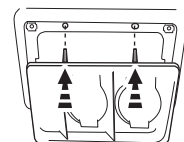


for Light (LH / RH)

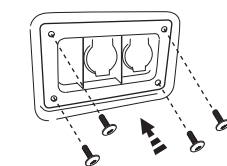


for Power socket (LH)

1st

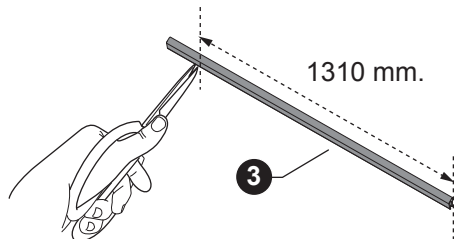


2nd

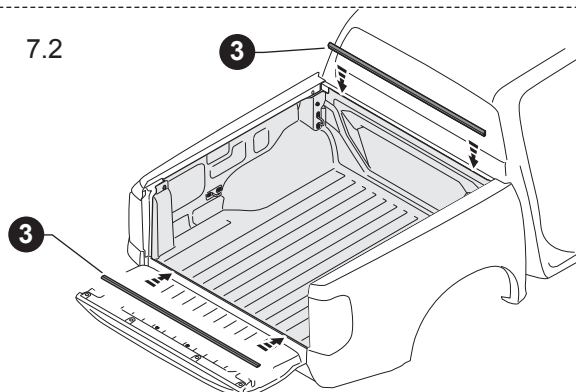


7

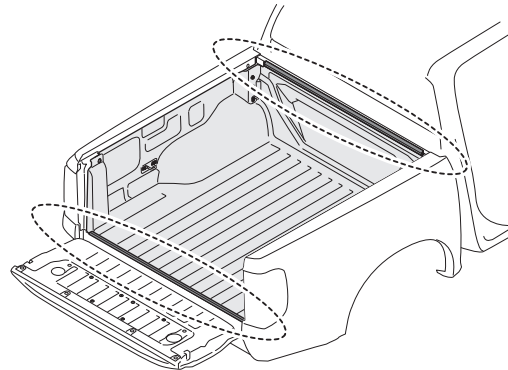
7.1



7.2



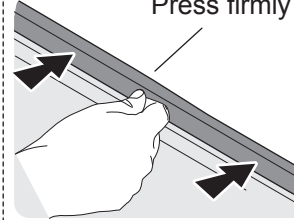
8



8.1

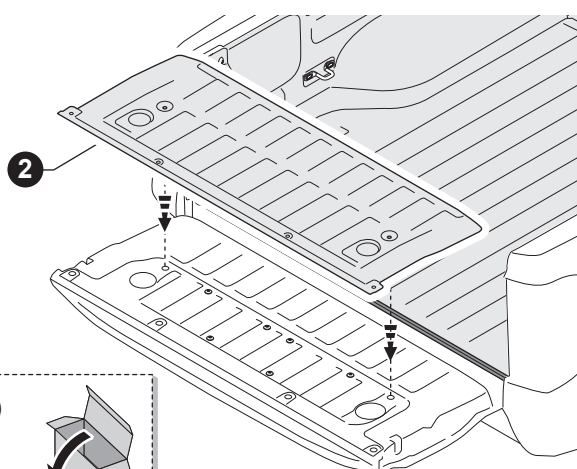


8.2

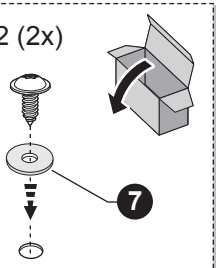


9

9.1



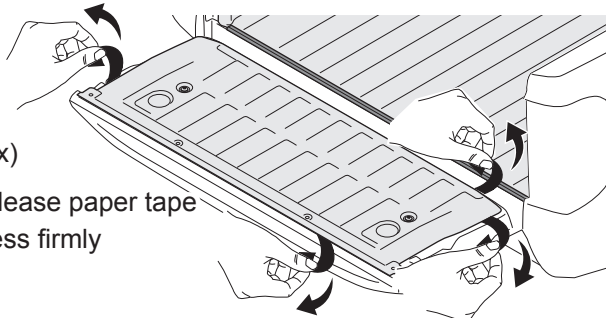
9.2 (2x)



10

10.1 (8x)

Peel release paper tape and press firmly



10.2 (4x)

